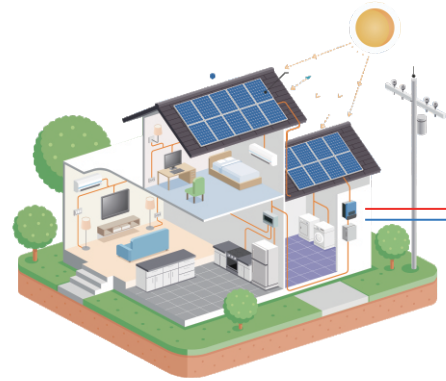


PRODUCT FEATURES

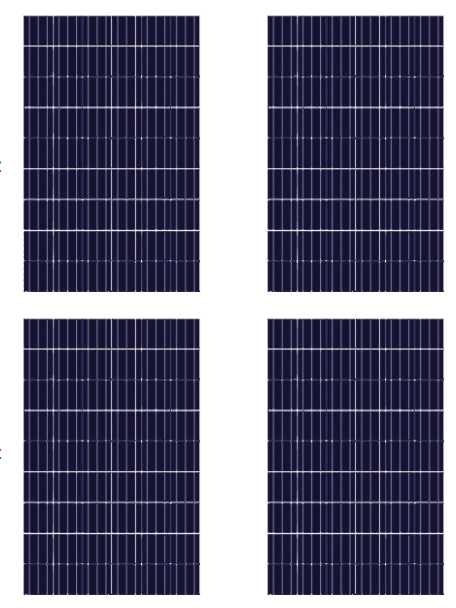
- A combination of inverter, solar charger and battery charger.
- Powerful bypass function with uninterrupted power supply function.
- Configurable AC/Solar input priority via LCD setting.
- Compatible with mains voltage or generator power.
- Overload, short circuit, over discharge protection.
- Status indication with RGB lights.
- Touch screen control module with various communications.
- Self-consumption and Feed-in to the grid.
- Compatible with AGM/Sealed, Gel, Flooded, Lithium batteries and a User Mode for custom inputs to work with virtually all battery types
- MPPT solar charge controller to maximize and regulate DC power from the solar array to charge the battery bank.
- Cold start and the smart battery charger design optimizes battery performance.
- Programmable multiple operation modes: Grid-tie, off-grid and grid-tie with backup.



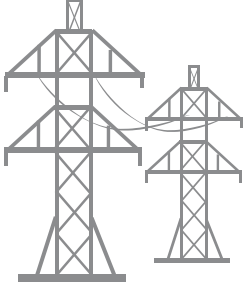
Green Power to Home



Solar Panel



Power grid



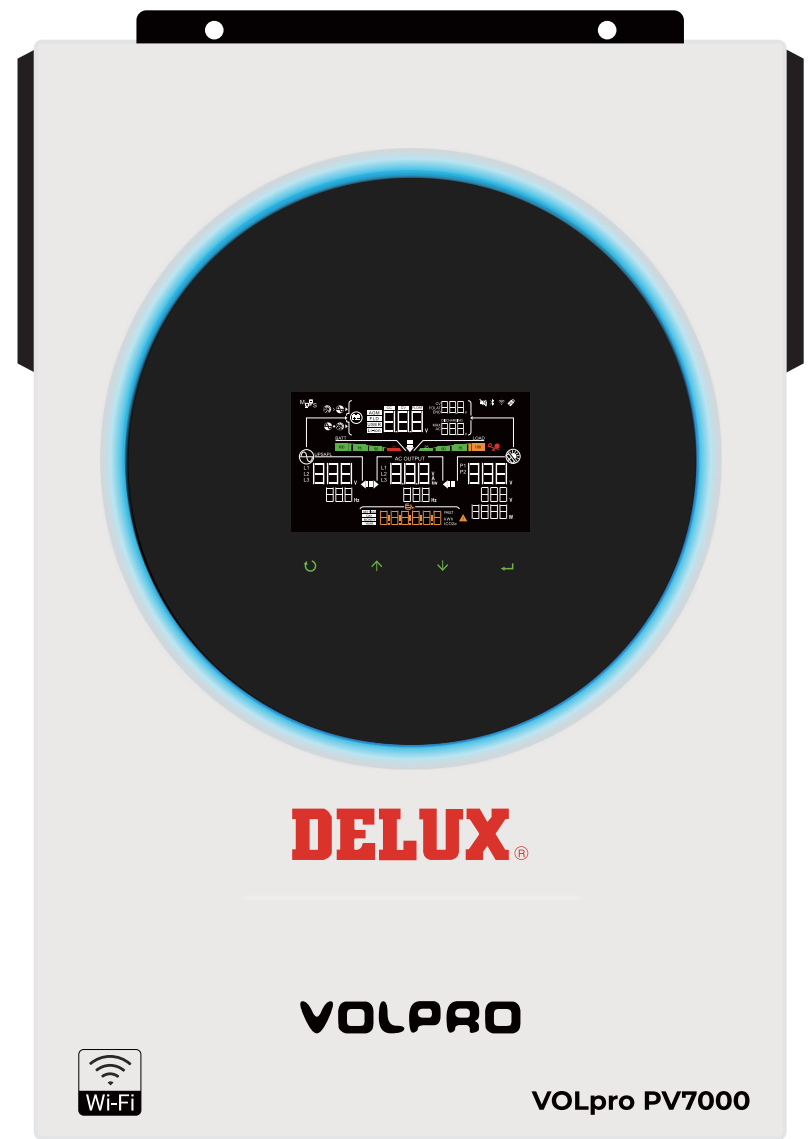
Battery bank



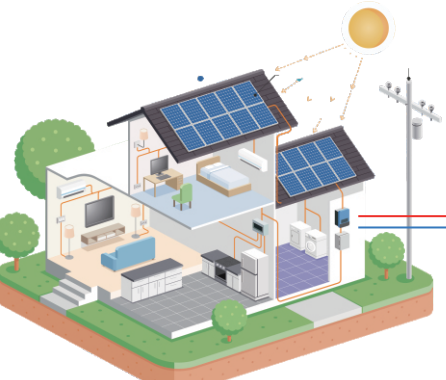
VOLpro PV7000

PRODUCT FEATURES

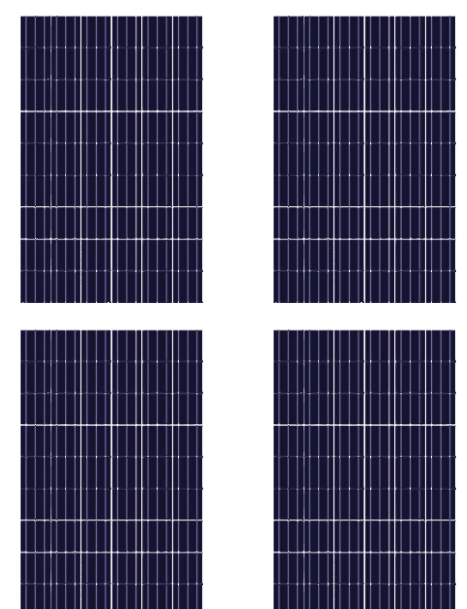
- A combination of inverter, solar charger and battery charger.
- Powerful bypass function with uninterrupted power supply function.
- Configurable AC/Solar input priority via LCD setting.
- Compatible with mains voltage or generator power.
- Overload, short circuit, over discharge protection.
- Status indication with RGB lights.
- Touch screen control module with various communications.
- Self-consumption and Feed-in to the grid.
- Compatible with AGM/Sealed, Gel, Flooded, Lithium batteries and a User Mode for custom inputs to work with virtually all battery types
- MPPT solar charge controller to maximize and regulate DC power from the solar array to charge the battery bank.
- Cold start and the smart battery charger design optimizes battery performance.
- Programmable multiple operation modes: Grid-tie, off-grid and grid-tie with backup.



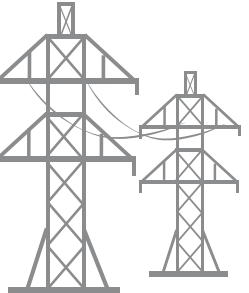
Green Power to Home



Solar Panel



Power grid



Battery bank



DATASHEET	VOLpro PV5500	VOLpro PV7000
Max. PV Array Power	5500W	7000W
Rated Output Power	4000W	6000W
Maximum PV Array Open Circuit Voltage	500VDC	500VDC
MPPT Range @ Operating Voltage	60Vdc-450Vdc	
MPPT Tracker Number	1	
GRID-TIE OPERATION		
GRID OUTPUT (AC)		
Nominal Output Voltage	220/230/240 VAC	
Output Voltage Range	184 - 264.5 VAC or 195.5 - 253 VAC (Selectable)	
Nominal Output Current	14.5A	26.1A
Power Factor	> 0.99	
EFFICIENCY		
Maximum Conversion Efficiency (DC/AC)	95%	95%
OFF-GRID, HYBRID OPERATION		
GRID INPUT		
Acceptable Input Voltage Range	90 - 280 VAC or 170 - 280 VAC	
Frequency Range	50 Hz/60 Hz (Auto sensing)	
Maximum AC Input Current	40A	40A
BATTERY MODE OUTPUT (AC)		
Nominal Output Voltage	220/230/240 VAC	
Output Waveform	Pure sine wave	
Efficiency (DC to AC)	93%	
BATTERY & CHARGER		
Nominal DC Voltage	24Vdc	48Vdc
Maximum Solar Charge Current	120 A	120 A
Maximum AC Charge Current	100 A	100 A
Maximum Charge Current	120 A	
GENERAL		
PHYSICAL		
Dimension, D x W x H (mm)	128*300*440	
Net Weight (kgs)	8.7	10.6
INTERFACE		
Communication Ports	USB/RS232/RS485/WIFI	
ENVIRONMENT		
Humidity	0 ~ 90% RH (Non-condensing)	
Operating Temperature	-10°C to 50°C	